

Roundup Ready Alfalfa: Current Regulatory Status and Required Production Practices

**Andrea Huberty, Ph.D.
USDA APHIS BRS**

Project Coordinator, RR Alfalfa EIS



United States Department of Agriculture
Animal and Plant Health Inspection Service



**Biotechnology
Regulatory
Services**



Outline

- Regulatory history of Roundup Ready (RR) alfalfa
- Status of RR alfalfa Environmental Impact Statement (EIS)
- RR alfalfa production
- Location of RR alfalfa fields

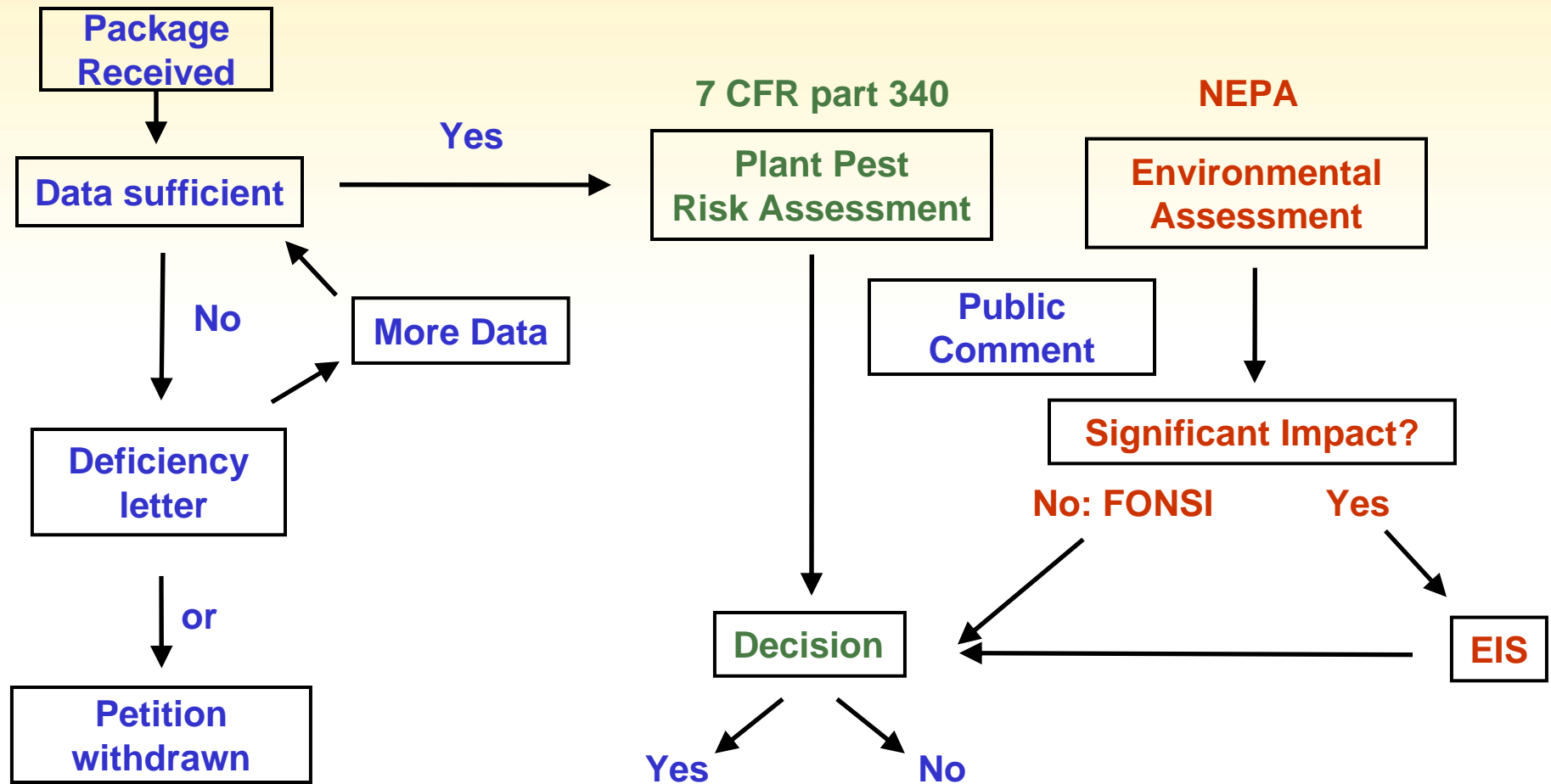


Regulatory History at APHIS

➤ RR Alfalfa

- 2003 – Petition for deregulation submitted for RR alfalfa
- 2005 - APHIS comes to a FONSI and deregulates RR alfalfa
- 2007- Lawsuit ruling disagreed with FONSI and reversed deregulation
- 2007 – EIS process initiated

Petition Process





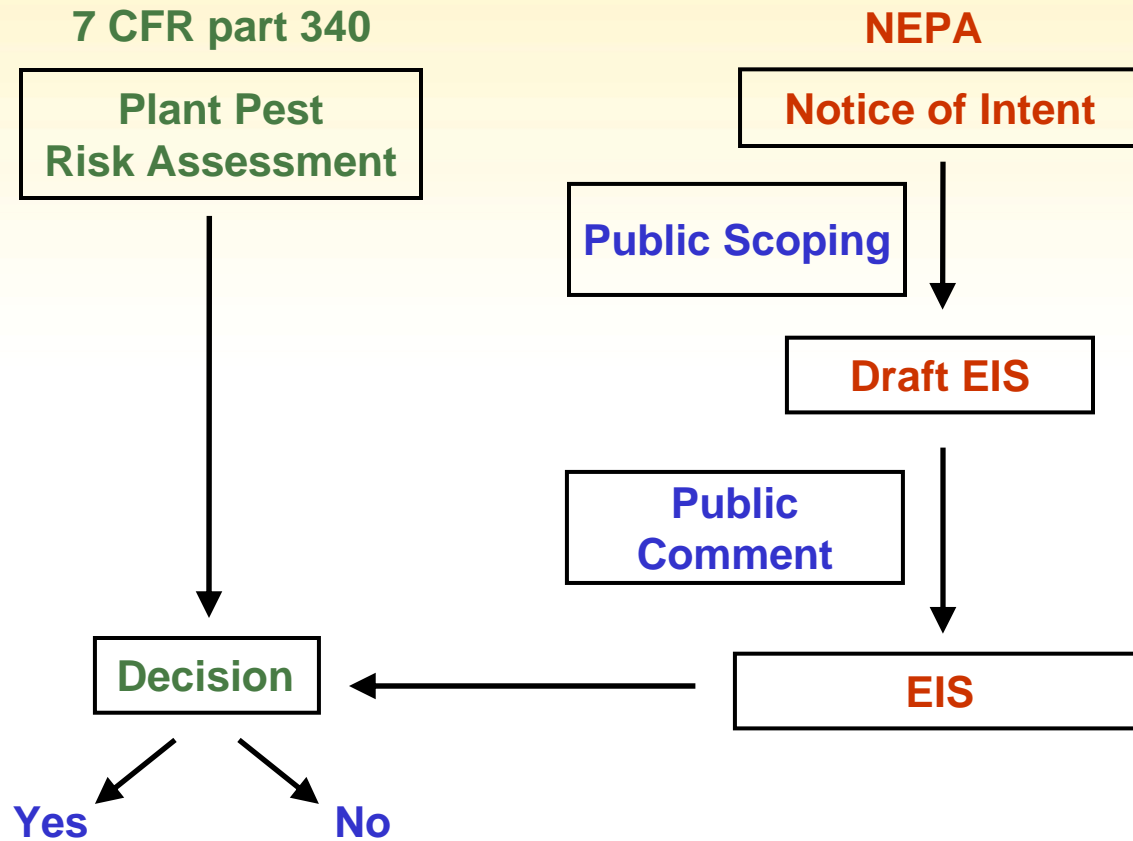
Regulatory History



➤ RR Alfalfa

- 2003 – Petition for deregulation submitted for RR alfalfa
- 2005 – APHIS reached a FONSI and deregulates RR alfalfa
- 2007- Lawsuit ruling disagreed with FONSI and reversed deregulation
- 2007 – EIS process initiated

EIS Process





RR Alfalfa EIS Summary

- Environmental Impact Statement (EIS)
 - Contractor selected and detailed work plan completed
 - BRS has started writing sections of EIS
 - Notice of Intent (NOI)
 - Under review
 - APHIS indicated to the judge that the EIS could take 2 years to complete



Agronomic Practices



- Under the permanent injunction, no RR alfalfa may be planted after March 30, 2007, except pursuant to an approved permit as per 7 CFR § 340.4.
- July 12, 2007 Administrative Order will remain in effect for as long as RR alfalfa is a regulated article under 7 CFR part 340.
- No APHIS-mandated changes for growing RR alfalfa
- Stewardship plans
 - <http://www.foragegenetics.com>
- Labeling



Location of RR Alfalfa



- Location Information
 - State and county list of RR alfalfa:
 - http://www.aphis.usda.gov/biotechnology/alfalfa_locations.shtml
 - **Call 1-866-724-6408 for more details on RR alfalfa locations**
 - For use by conventional and organic alfalfa farmers and prospective alfalfa farmers to inquire about the proximity of their farms or fields to RR alfalfa.
 - Callers must comply with the following two requirements:
 - Callers must be a person who either currently plants conventional or organic alfalfa or plans to do so.
 - Callers must be ready to provide the operator with either
 - Latitude and longitude coordinates or
 - Mailing address of their farm or field where the alfalfa is or will be grown.
 - » Other types of location information cannot be accepted
 - » Only one location from each caller per phone call will be accepted.
 - An operator will be available from 9 a.m. to 5 p.m. eastern time, Monday through Friday (except holidays).





For More Information:

- **BRS Alfalfa:**

<http://www.aphis.usda.gov/biotechnology/alfalfa.shtml>

- **To submit scoping comments on the NOI for RR Alfalfa EIS:**

<http://www.regulations.gov>

- **BRS website:**

http://www.aphis.usda.gov/biotechnology/brs_main.shtml